

passende Einsätze:

CQ 08	8 polig + ⊕	64
CQ 04/2	4 polig + 2 polig + ⊕	65

Seite

Anbaugehäuse



NEUHEIT

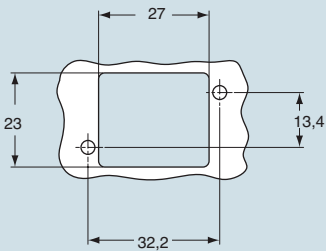
Tüllengehäuse



NEUHEIT

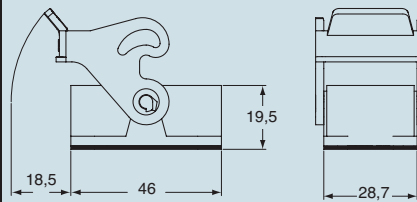
Beschreibung	Artikelbezeichnung	Artikelbezeichnung	Ausgang Pg
mit Bügel	CQ 08 I		
mit Bolzen, seitlicher Kabelausgang		CQ 08 VA	16
mit Bolzen, gerader Kabelausgang		CQ 08 V	21

Auf Anfrage: EMV-Gehäuse.
Montageausschnitt Anbaugehäuse in mm



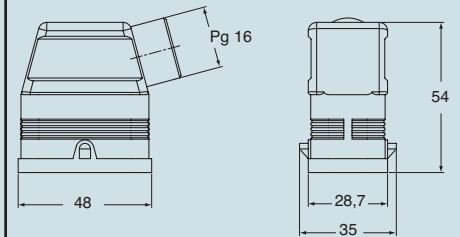
Abmessungen in mm

CQ I

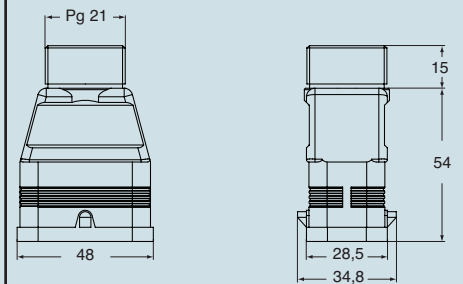


Abmessungen in mm

CQ VA



CQ V



Die angegebenen Abmessungen sind nicht verbindlich.
Technische Änderungen bleiben vorbehalten.

Größe 32.13

inserts:		page
CQ 08	8 poles + ⊕	64
CQ 04/2	4 poles + 2 poles + ⊕	65

**bulkhead mounting housing
single closure**



NEW

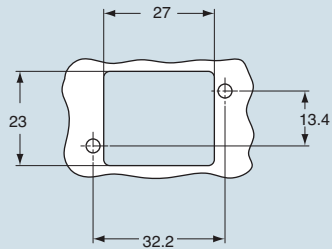
**hood
for single closure**



NEW

description	part No.	part No.	entry Pg
with lever	CQ 08 I		
with pegs, side entry *		CQ 08 VA	16
with pegs, top entry *		CQ 08 V	21

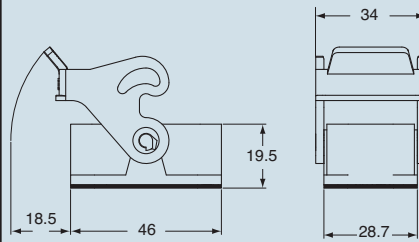
panel cut-out for enclosures, in mm



* Pg male thread on outside of enclosure

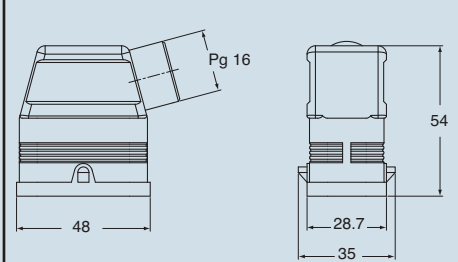
dimensions in mm

CQ I

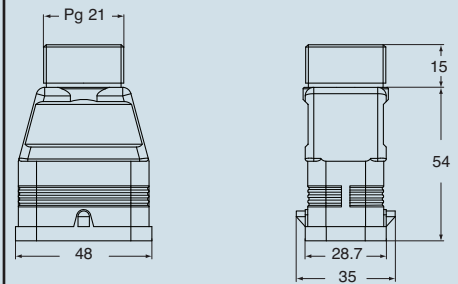


dimensions in mm

CQ VA



CQ V



dimensions shown are not binding
and may be changed without notice

size 32.13