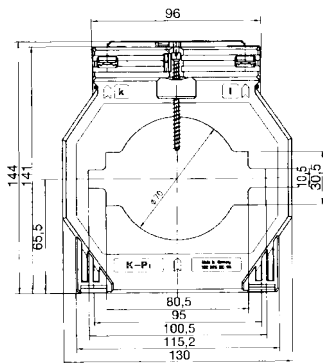
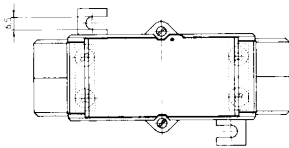
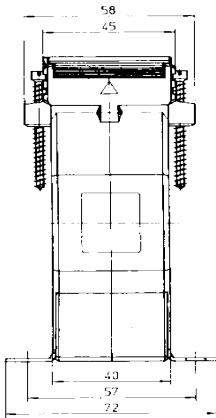


# ASK 101.4

## Aufsteck-Stromwandler



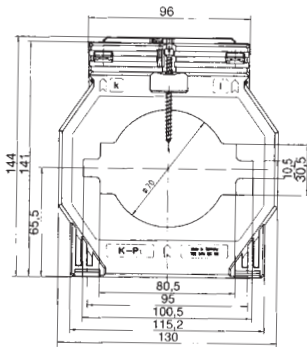
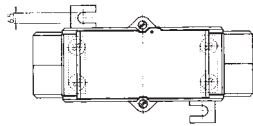
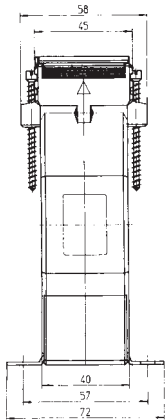
Primärleiter	100 x 10 mm 2 x 80 x 10 mm
Rundleiter	Ø 70 mm
Wandlerbreite	130 mm
Schnappbefestigung	—
Plombierplatte	<b>Best.-Nr. 59042</b> siehe Seite 195

Sekundärstrom		5A		1A	
Primär-Strom A	Bem.-Leist. VA	Genauigkeitsklasse		Genauigkeitsklasse	
		1	0,5	1	0,5
		Best.-Nr.	Best.-Nr.	Best.-Nr.	Best.-Nr.
500	2,5		22009		22209
	5	22076	22010	22276	22210
	10	22077		22277	
600	2,5		22011		22211
	5	22038	22012	22238	22212
	10	22039		22239	
750	2,5		22013		22213
	5	22040	22014	22240	22214
	10	22041	22078	22241	22281
800	5	22042	22015	22242	22215
	10	22043	22016	22243	22216
	15	22044		22244	
1000	5	22045	22017	22245	22217
	10	22046	22018	22246	22218
	15	22047		22247	
	30	22115		22278	
1200	5	22048	22019	22248	22219
	10	22049	22020	22249	22220
	15	22050		22250	
	30	22051		22251	
1250	5	22052	22021	22252	22221
	10	22053	22022	22253	22222
	15	22054		22254	
	30	22055		22255	
1500	5	22056	22023	22256	22223
	10	22057	22024	22257	22224
	15	22058	22025	22258	22279
	30	22059		22259	
1600	5		22026		22226
	10	22060	22027	22260	22227
	15	22061	22028	22261	22228
	30	22062		22262	
	45	22063		22263	
1800	5		22029		22229
	10	22064	22030	22264	22230
	15	22065	22031	22265	22231
	30	22066		22266	
	45	22067		22267	
2000	5		22032		22232
	10	22068	22033	22268	22233
	15	22069	22034	22269	22234
	30	22070	22118	22270	22280
	45	22071		22271	
2500	5		22035		22235
	10	22072	22036	22272	22236
	15	22073	22037	22273	22237
	30	22074	22119	22274	22337
	45	22075		22275	



# ASK 101.4

Plug-in current transformer



Secondary current		5A		1A	
Primary current A	Burden VA	Accuracy class		Accuracy class	
		1	0.5	1	0.5
		Art.-no.	Art.-no.	Art.-no.	Art.-no.
500	2.5		22009		22209
	5	22076	22010	22276	22210
	10	22077		22277	
600	2.5		22011		22211
	5	22038	22012	22238	22212
	10	22039	22239		
750	2.5		22013		22213
	5	22040	22014	22240	22214
	10	22041	22078	22241	22281
800	5	22042	22015	22242	22215
	10	22043	22016	22243	22216
	15	22044		22244	
1000	5	22045	22017	22245	22217
	10	22046	22018	22246	22218
	15	22047		22247	
	30	22115		22278	
1200	5	22048	22019	22248	22219
	10	22049	22020	22249	22220
	15	22050		22250	
	30	22051		22251	
1250	5	22052	22021	22252	22221
	10	22053	22022	22253	22222
	15	22054		22254	
	30	22055		22255	
1500	5	22056	22023	22256	22223
	10	22057	22024	22257	22224
	15	22058	22025	22258	22279
	30	22059		22259	
1600	5		22026		22226
	10	22060	22027	22260	22227
	15	22061	22028	22261	22228
	30	22062		22262	
	45	22063		22263	
1800	5		22029		22229
	10	22064	22030	22264	22230
	15	22065	22031	22265	22231
	30	22066		22266	
	45	22067		22267	
2000	5		22032		22232
	10	22068	22033	22268	22233
	15	22069	22034	22269	22234
	30	22070	22118	22270	22280
	45	22071		22271	
2500	5		22035		22235
	10	22072	22036	22272	22236
	15	22073	22037	22273	22237
	30	22074	22119	22274	22337
	45	22075		22275	

Primary conductor	100 x 10 mm 2 x 80 x 10 mm
Round conductor	Ø 70 mm
Transformer width	130 mm
Snap-on mounting	—
Sealed shutter	<b>Art.-no. 59042</b> see page 205